

# 2011

2011 .

-

,

-

2009, 2010 2011 .

.

\_\_\_\_\_

## 1.

- 12, :

- ,

- - -1 . . ,

- -10 . .

2011 .

-10, : , .-

8 . 2011 .

.

7

.

,

2009 .

,

-

-

.

230, .1 .

14 2011 . 2012 .

31.12.2011 . :

- -20 . 4 .;
- -15 . 10 .;
- -14 . 8 .;
- -14 . 8 .;
- -14 . 5 .;
- -13 . 6 .;
- -12 . 6 .;
- -11 . 4 .;
- -10 . 7 .

” ”

2011 .

.196, .2

.196, .1

2.

2011 . 32

,  
 ,  
 ,  
 ” ”,  
 ,  
 .  
 —  
 .  
 ,  
 — ,  
 .  
 2011 . 28  
 23 ” ” 5  
 ” . ”.  
 — ,  
 20  
 .

**3. \_\_\_\_\_**

2010 .

2011,

2011 . :

- -58,69;

- -29,51.

,

- . ,

-

,

,

.

.

-

,

-

.

1:3,2.

,

,

,

.

.

**1.**

.

.

-

,

,

.

,

8

:

•

;

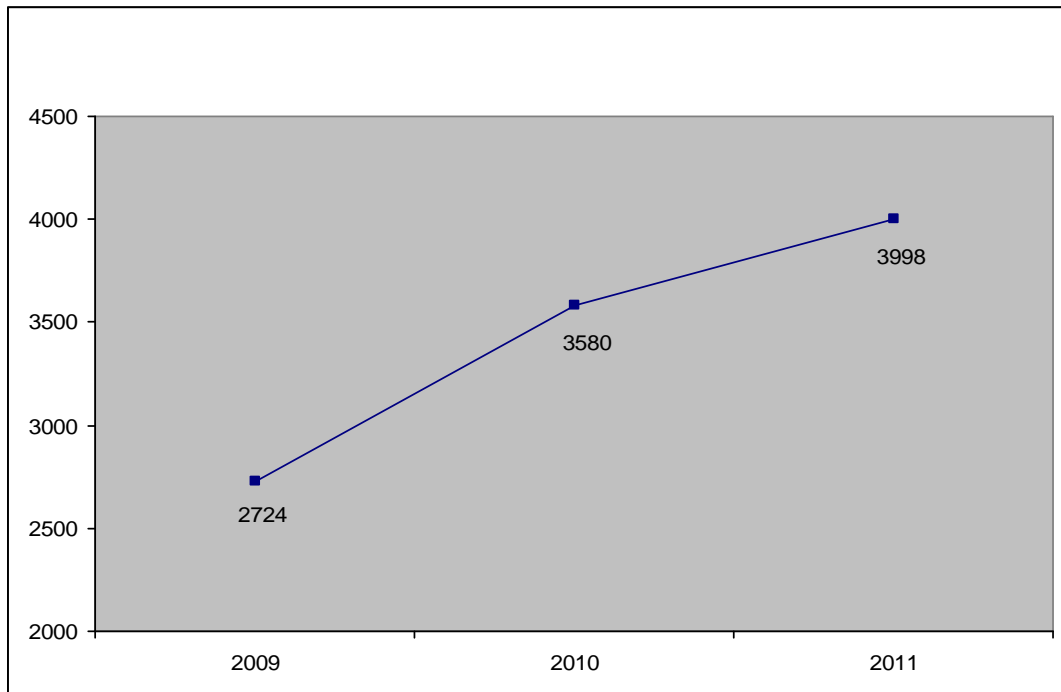
- ;
- - ;
- - .75 ;
- - ;
- - ;
- ;
- .

2011 . ,  
 3998 , 2376 1622

.  
 2010 . 3580

2724 2009 .

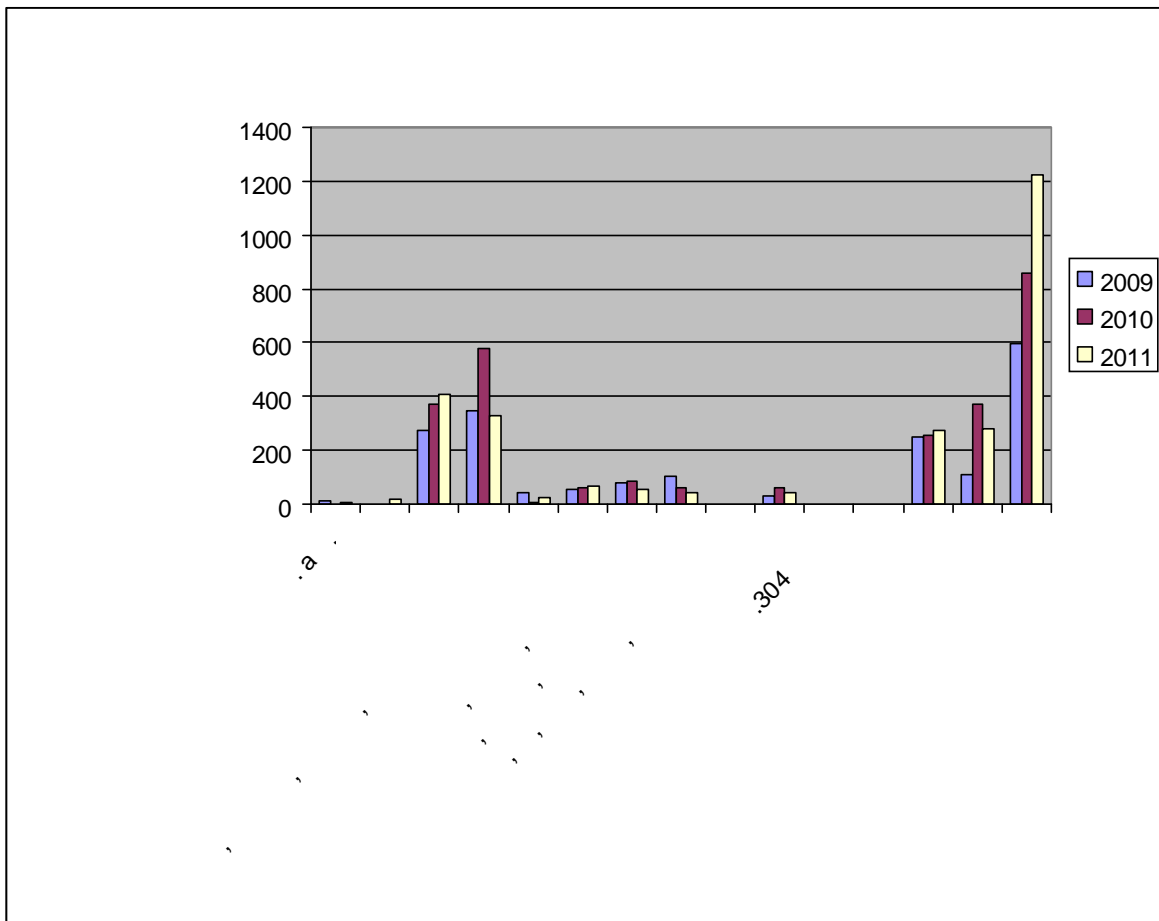
2009, 2010 2011



2011 .  
 194 - 2010 . 343

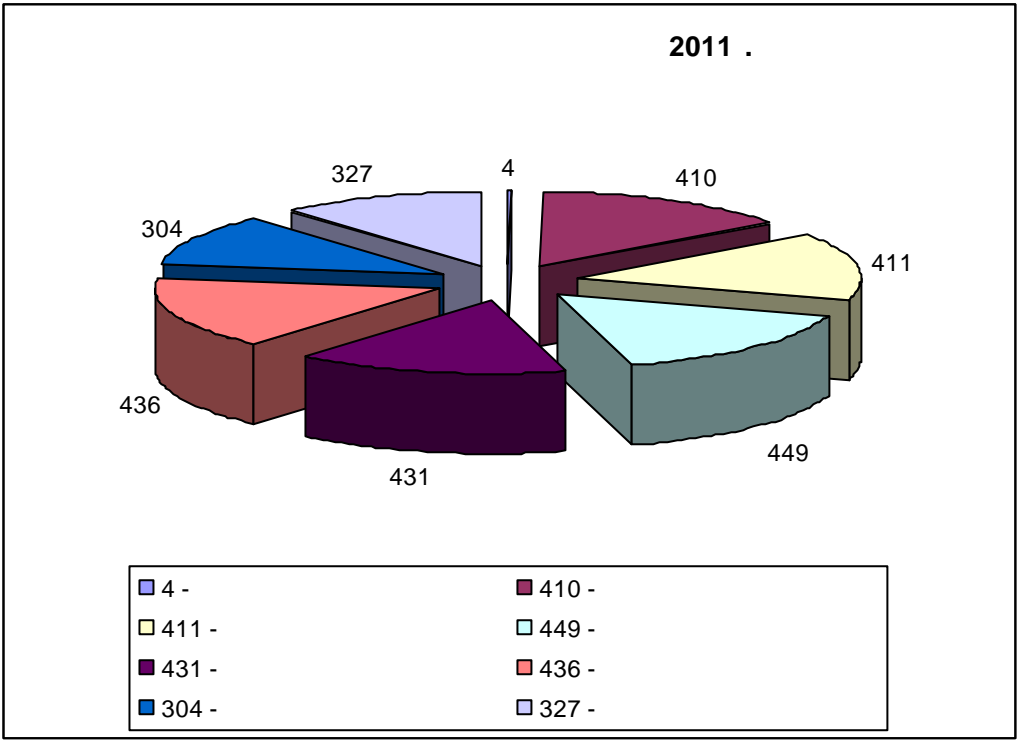
2009 .

2011 . 2009 . 2011 .  
 2376 612 2010 . 931  
 2009 .  
 2011 . 2772.  
 1547 1225 -  
 2010 . 2705 , 1847  
 858 .  
 2009 . 1908, 1313  
 595 .  
 2011 . 2,5% 2010  
 . 42 % 2009 .  
 -  
 2011 ,, 2009 2010 .  
 : ; ;  
 .



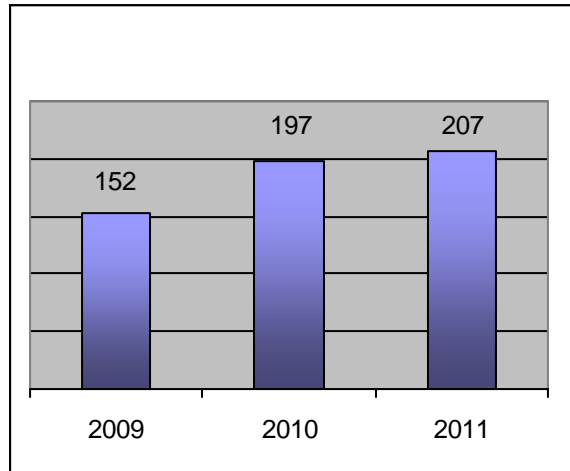
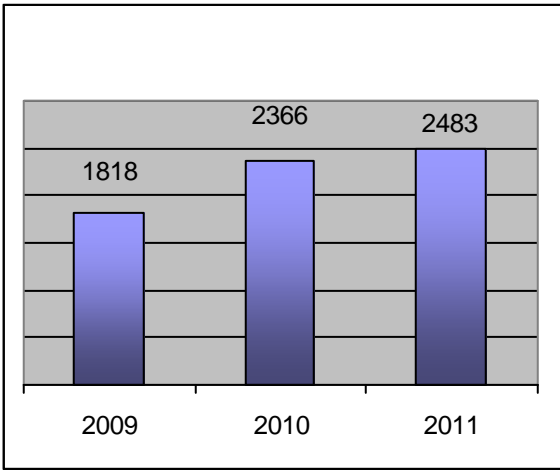
- 
- 

2011 .



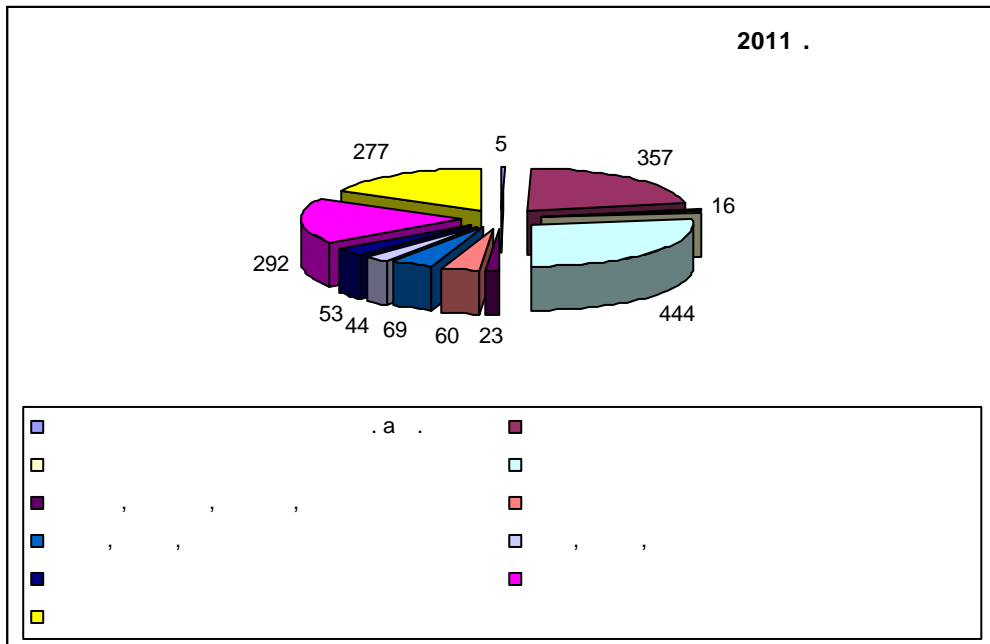
2. \_\_\_\_\_

2483, 2366 2010 1818 2009 .  
 2011 . 30 % 2009 . 5%  
 2010 . - ,  
 - 2009 . 152  
 , 2010 . 2011 .  
 200.



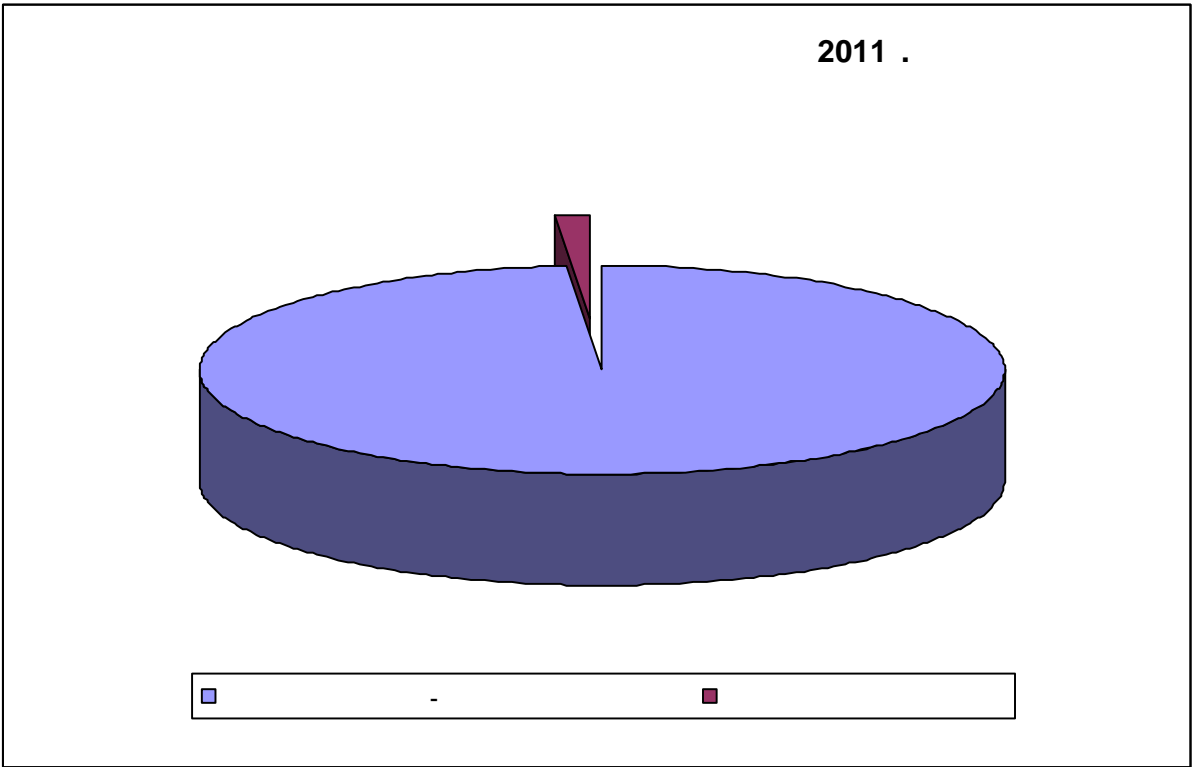
-  
 2011 ., 1639  
 .,  
 :  
 - 16 .  
 - 357 . ;  
 - 444 . ;  
 - 23 . , , . ;  
 - 60 . ;  
 - 69 .- , , ;  
 - 44 .- , , , ;  
 - 53 . ;  
 - 292 . ;  
 - 277 . ;  
 - 5 . .





-  
 2009 .  
 37,46 %  
 2010 57,17 %  
 844 .  
 -  
 -  
 ,  
 ,  
 ,  
 .

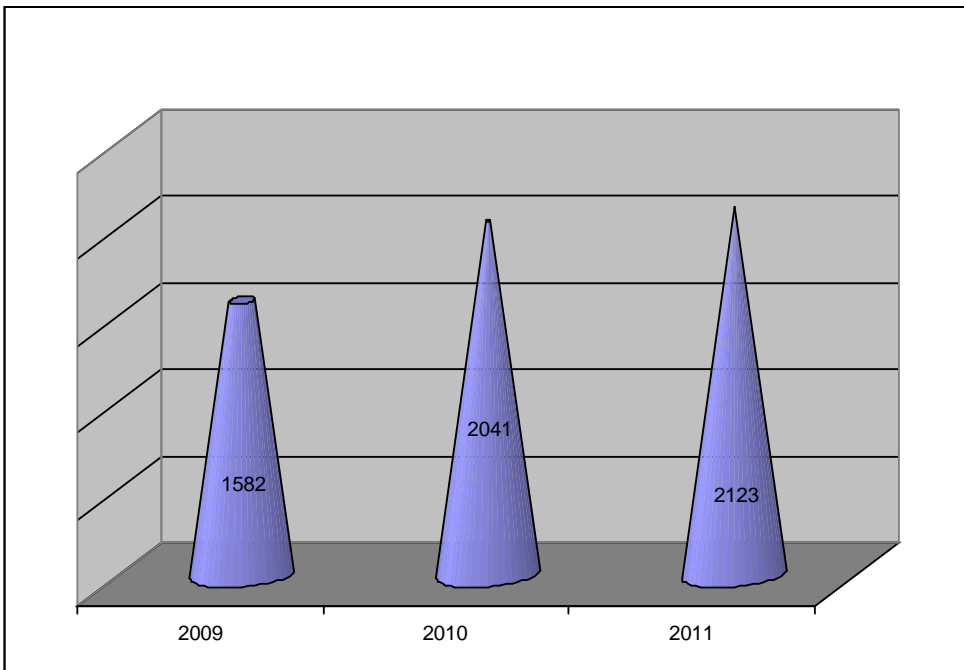
844, 614 2010 537  
 2011 .  
 2009 .  
 2011 ., 833  
 , 38,83 % 2010 .



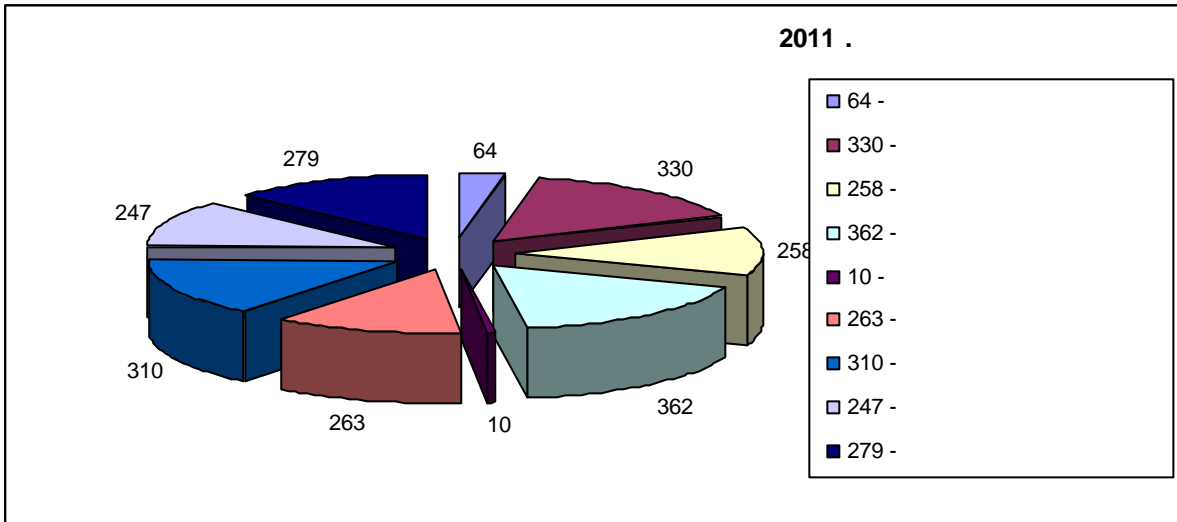
**2.1.**

2011 . 2123,      2010 .      2041,      2009 . - 1582.

: 2011 . - 4 %      2010 . 35 %      2009 .



2011 . 85,50 %  
 , 86,26 % 2010 . 87 % 2009 .



2123 2011 .,  
 820 ., 135 ., 1159 . 9

2041, 737 .,  
 - 88 ., 1201 . 15

2009 . 1582,  
 548 ., -76 ., 958 .

**2.2. \_\_\_\_\_**

2011 . 360 ., 325  
 2010 . 236 . 2009 .

360 2011  
 . 198 . 159 .

**2.3.** \_\_\_\_\_

**2.3.1.** \_\_\_\_\_ **1** \_\_\_\_\_

2011 . 1 ,  
 507

20,42 %

2010 . 457 19,32 %,

2009 . 1 250 ,, 13,75 %

1

2009 .

**2.3.2.** \_\_\_\_\_ **1 3** \_\_\_\_\_

2011 . 1 3 ,  
 309

12,44 %

2010 . 1 3 626 26,46

%, 2009 . - 499 ,, 27,45 %

1 3 2009 2010 .

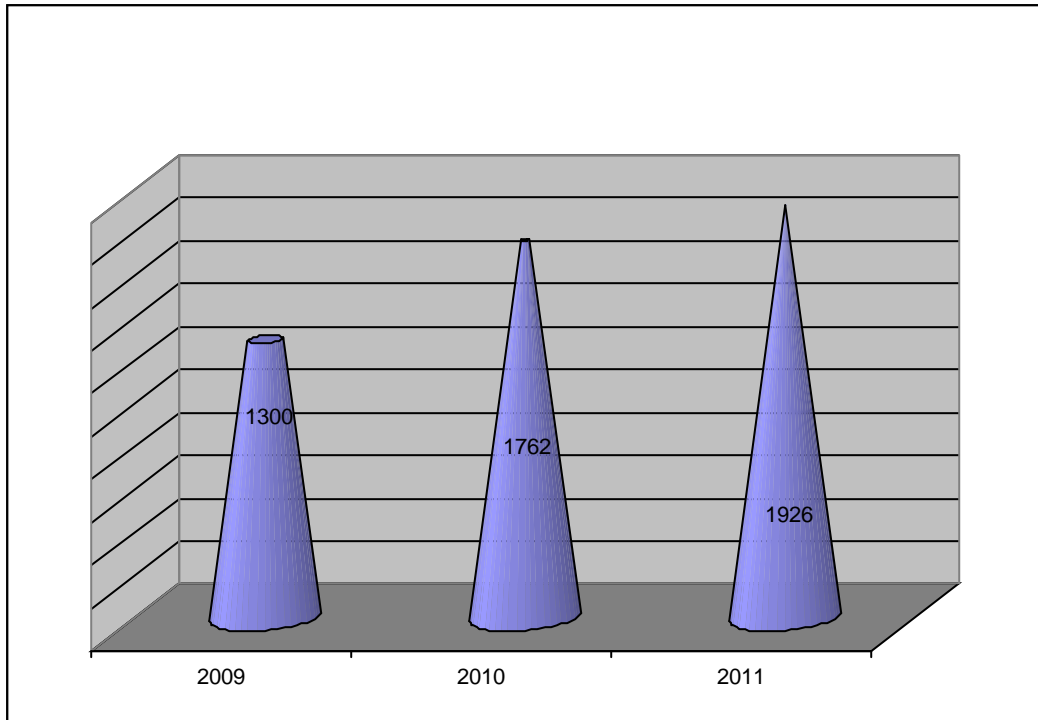
30, 2011 .

**2.3.3. \_\_\_\_\_ 3**

2011 . 3 ,  
1667  
67 %  
2010 . 3 1283 54 %,  
2009 . - 1069 ., 59 % .

**2.4. \_\_\_\_\_**

2011 . 1 ,  
,  
1926 78 % 2483 .  
2010 . 1762  
74 %, 2009 . 1 1300  
, 72 % .  
1 3  
481 19 % , 3 97  
3 % .



**3.** \_\_\_\_\_

737  
 (2010 .) 1226 . 778 . 875 . 1515,  
 2009 .

**3.1.** \_\_\_\_\_

\_\_\_\_\_ :

- ( .

. ) 420 ;

- ,

:

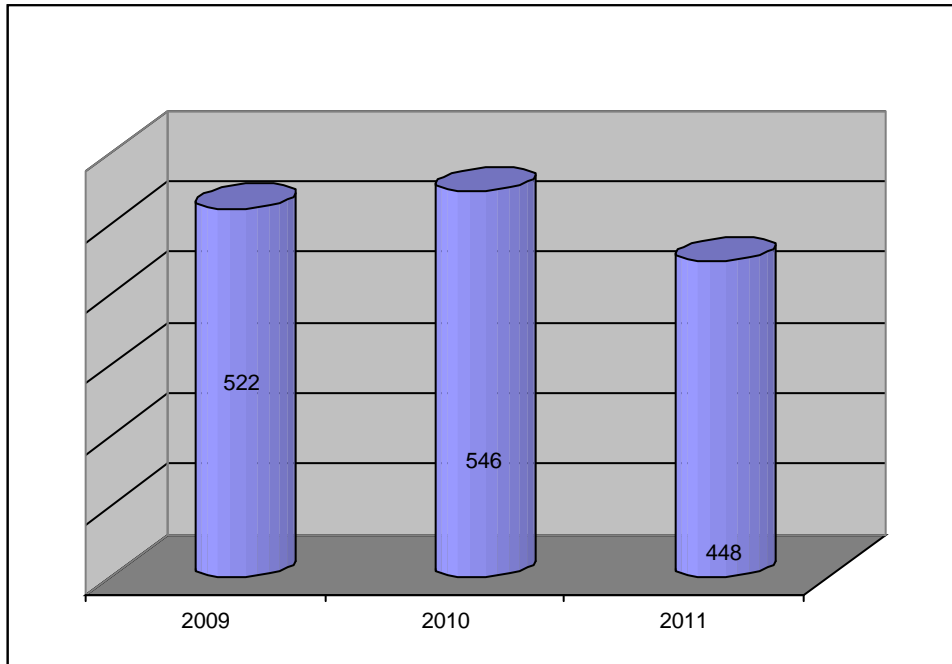
- ,
- , ;

;

• ;  
 - ,  
 ” ”;  
 - ;  
 - ,  
 - ;  
 ;  
 -  
 ;  
 -  
 - .

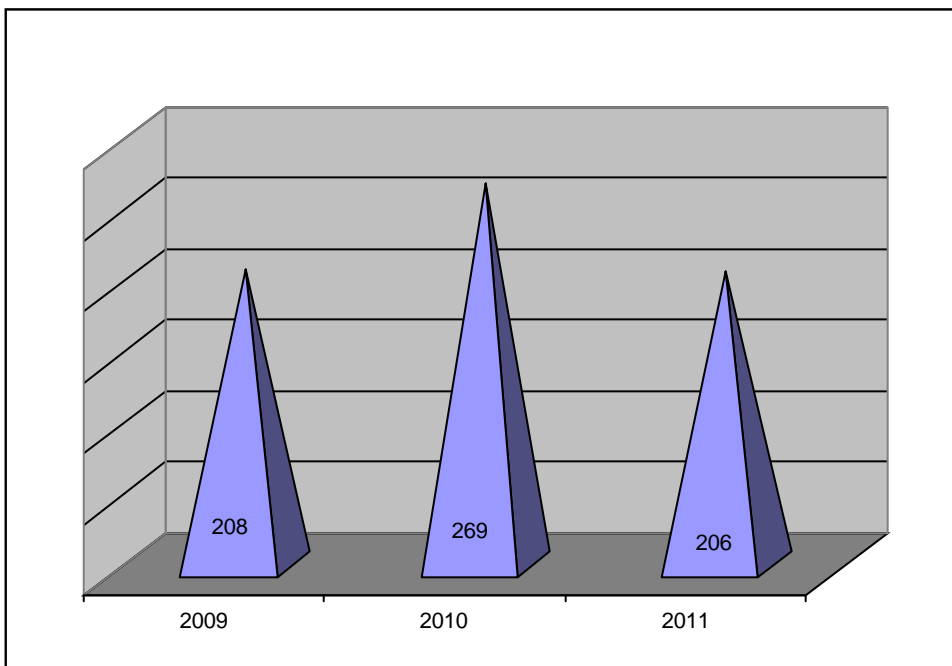
**4.** \_\_\_\_\_  
 2011 . 654,  
 2010 . 821 , 2009 . – 734 .  
 , 2011 .  
 2010 . 2009 .  
 - , .

**4.1.** \_\_\_\_\_  
 2011 . 448  
 . 2010 .  
 546 ., 2009 . – 522.



**4.2.** \_\_\_\_\_

2011 ., 206  
 . 2010 .  
 269, 2009 . – 208.





**5.** \_\_\_\_\_

2011 .  
722, 2010 . 673, 2009 . -  
663.  
2011 . 579, 2010 . 480, 2009 . - 476 .  
2009 2010 . 71 % . 2011 .  
80.

**5.1.** \_\_\_\_\_

532 . 401 ., 104  
, 1 26 .  
2011 . 75,38 %  
- ,  
.

-  
:

											.221, .3					
		2009	2010	2011	2009	2010	2011	2009	2010	2011	2009	2010	2011	2009	2010	2011
1	.	65	34	20	56	28	14	9	5	5		1				1
2	.	40	53	92	27	31	65	6	15	24	1	1		6	6	3
3	.	50	37	67	34	23	48	8	11	16	2	1	1	6	2	2
4	.	52	53	83	35	36	65	9	11	13	1			7	6	5
5	.	19	2	28	15	2	22	4		6						
7	.	37	60	72	28	51	47	3	5	17				4	4	8
8	.	60	91	77	44	67	67	7	14	6	1	1		8	9	4
9	.	34	1	14	23	1	11	8		3				3		
10	.	35	69	75	24	42	59	6	22	14	1	1		4	4	2
12	.	38	38	4	30	36	3	7				2		1		1
:		430	438	532	316	317	401	67	83	104	6	7	1	39	31	26

5.2.

2011 .. - 190,  
 178 ,6 ,1 5 .  
 2011 . 94 % - ,

:

		2009	2010	2011	2009	2010	2011	2009	2010	2011	2009	2010	2011	2009	2010	2011
1	.	14	21	3	10	11	3	4	10							
2	.	25	40	28	18	27	27	6	13	1				1		
3	.	21	24	25	12	15	23	8	8	1	1	1	1			
4	.	19	26	27	16	19	24	3	7	2						1
5	.	3	11	4	1	6	4	2	5							
7	.	22	33	29	17	26	26	5	7	1						2
8	.	31	25	36	19	22	36	10	3					2		
9	.	22	2	13	15	2	11	7		1						1
10	.	32	35	24	22	27	23	8	8		1			1		1
12	.	26	8	1	19	7	1	6	1					1		
	:	<b>215</b>	<b>225</b>	<b>190</b>	<b>149</b>	<b>162</b>	<b>178</b>	<b>59</b>	<b>62</b>	<b>6</b>	<b>2</b>	<b>1</b>	<b>1</b>	<b>5</b>	<b>0</b>	<b>5</b>

**6.**

---

,

,

,

-

,

.

.

.

**7.**

---

-

,

”

”

10

,

,

—

2011 .

8

.

,

2011

7

.

2011 . 58,69

29,51

,

-

.

2011 .

—

45,95

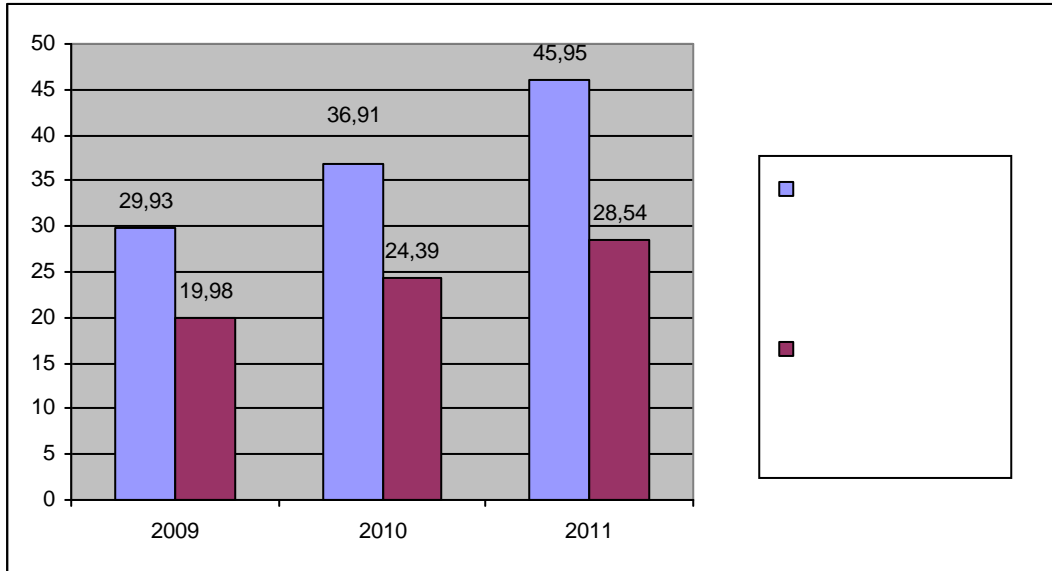
28,54

.

,

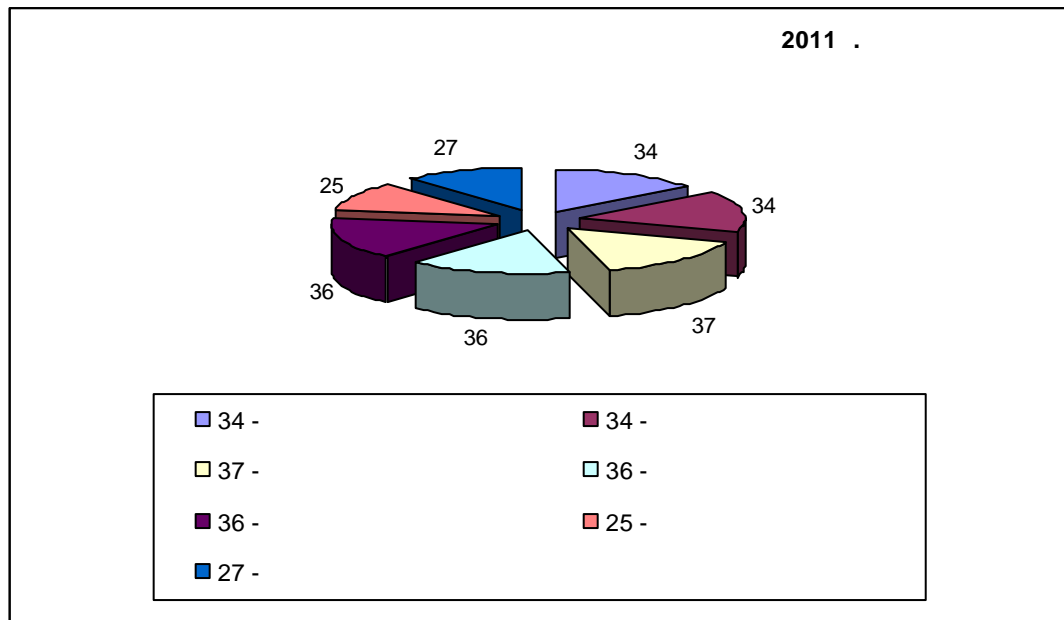
25 % ,

-



2011 .

:





” ”.

2011 .

.

,

2011 . 8

,

.

.

**3.**

—

.

( ) ” ”,

.

-

” ”.

-

,

Law

Choise 3.2,

[www.admcourt-bs.org](http://www.admcourt-bs.org),

.

, , .  
-  
, .  
-  
. - 3000-3800 .

,  
. .  
. 2011 .  
. 137, . 2 , . 42, . 4 .  
,

**4.** \_\_\_\_\_

2011 .  
-  
,  
01.01.2010 . 31.05.2011 .



5. \_\_\_\_\_  
2011

5

-12264/27.09.2011 . . . ,

2010 .

20.10.2011 .

2011 .

2011 .

,

,

.

.

—

,

.

.

-

-

:

( .

)